



Metal bellows coupling TYPE 555 - up to 900 Nm

Characteristics:

- Close-fit retaining clamps
- Operational temperature of up to 500°C for short time , lasting up to 300°C
- Torsional rigidity
- Low backlash
- Corrosion-resistant stainless steel type available

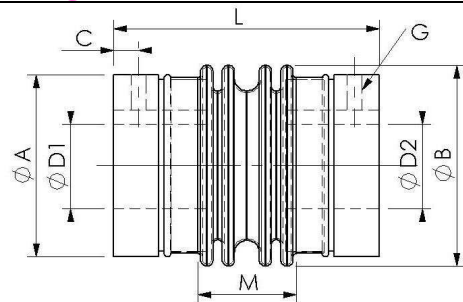
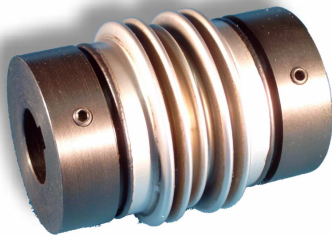
Application:

- Packing machines
- Roller drives
- Winding machines
- Textile machines
- Paper machines
- Printing machines

Predominately used for mounting uniformly running drives without major impact loads

Available with keyway according to DIN 6885.

TYPE 555 up to 900 Nm , mounting hub welded



Size	M _N (Nm)	Spring constant in N/mm (lateral)	Spring constant in N/mm (axial)	Moment of inertia (app. 10 ⁻³ kg m ²)	Weight (app. in kg)	Spring constant (Torque 10 ³ Nm/rad)	L	A	G (DIN 916)	D1/D2	B	M	C
56	50	171	102	0,2	0,65	19	81	48	M5	15...28	56	27	8
56.1	74	263	208	0,2	0,65	28	81	48	M5	18...28	56	27	8
56.2	90	314	298	0,21	0,65	35	81	48	M5	20...28	56	27	8
66	115	253	112	0,58	1,2	56	86	59	M6	20...32	66	24	8
66.1	155	367	196	0,6	1,25	84	86	59	M6	20...32	66	24	8
66.2	175	407	218	0,6	1,25	95	86	59	M6	24...32	66	24	8
82	190	249	87	1,45	1,8	94	106	73	M8	24...40	82	40	9
82.1	250	358	125	1,47	1,83	120	106	73	M8	24...40	82	40	9
82.2	310	406	138	1,5	1,88	163	106	73	M8	28...40	82	40	9
101	305	271	128	5,4	4,1	159	125	95	M8	30...50	101	39	9
101.1	440	377	192	5,5	4,15	228	125	95	M8	30...50	101	39	9
101.2	510	435	228	5,5	4,2	311	125	95	M8	35...50	101	39	9
122	500	325	188	12,2	6,4	293	142	113	M10	40...65	122	44	12
122.1	730	411	270	12,4	6,5	424	142	113	M10	40...65	122	44	12
122.2	900	485	315	12,5	6,6	505	142	113	M10	45...65	122	44	12

For alternating rotation directions, we recommend our no backlash compensating couplings with locked shaft-hub connections.

shaft misalignment:

Allowed
Assembly
Operational

lateral
0,8 mm
0,2 mm

axial
2mm
0,5mm