

## Metal bellows coupling TYPE 550 - up to 1700 Nm

### Characteristics:

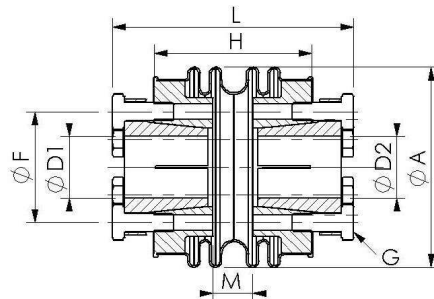
- Partially corrosion-resistant (welded mounting hub)
- Operational temperature of up to 500°C for short time , lasting up to 300°C
- No backlash and torsionally rigid
- High rotational speeds possible
- Maintenance free and non-wearing
- Tapered bores and bushings are slotted

### Application:

- Machine tools
- Industrial robots
- Handling systems
- Packing machines
- Textile machines
- Wood- working- machines
- Transfer systems etc.

Available with keyway according to DIN 6885.

### TYPE 550 up to 1700 Nm , mounting hub welded



Size	M <sub>N</sub> (Nm)	Spring constant in N/mm (lateral)	Spring constant in N/mm (axial)	Moment of inertia (app. 10 <sup>-3</sup> kg m <sup>2</sup> )	Weight (app. in kg)	Torsional rigidity (Torque 10 <sup>3</sup> Nm/rad)	L	A	6 x G (DIN 933)	D1/D2	H	M	F
56	50	171	102	0,16	0,6	19	72	56	M5	15...24	47	9	36
56.1	74	263	208	0,17	0,6	28	72	56	M5	18...24	48	9	36
56.2	90	314	298	0,17	0,6	35	72	56	M5	20...24	48	9	36
66	115	253	112	0,35	0,85	56	77	66	M6	18...24	52	14	36
66.1	155	367	196	0,37	0,9	84	77	66	M6	18...24	52	14	36
66.2	175	407	218	0,39	0,9	95	77	66	M6	20...24	52	14	36
82	190	249	87	0,7	1,5	94	98	82	M6	20...38	68	28	51
82.1	250	358	125	0,72	1,55	120	98	82	M6	25...38	68	28	51
82.2	310	406	138	0,75	1,6	163	98	82	M6	28...38	68	28	51
101	305	271	128	3,1	2,9	159	113	101	M8	26...48	77	29	65
101.1	440	377	192	3,2	2,95	228	113	101	M8	30...48	77	29	65
101.2	510	435	228	3,2	3	311	113	101	M8	35...48	77	29	65
122	500	325	188	6,3	4,3	293	129	122	M10	30...60	82	22	82
122.1	730	411	270	6,4	4,4	424	129	122	M10	36...60	82	22	82
122.2	900	485	315	6,5	4,5	505	129	122	M10	40...60	82	22	82
157.2	1700	850	205	21	8,5	1180	138	157	M12	40...70	82	18	100

**shaft misalignment:**

**Allowed**

Assembly

Operational

**lateral**

0,8 mm

0,2 mm

**axial**

2mm

0,5mm