

Metal bellows coupling, TYPE 51- up to 25 Nm

Characteristics:

- Corrosion-resistant aluminium hubs, stainless steel metal bellows
- Operational temperature up to 100°C (please call us in case of higher temperatures)
- No backlash
- High rotational speeds possible
- Maintenance free and non-wearing

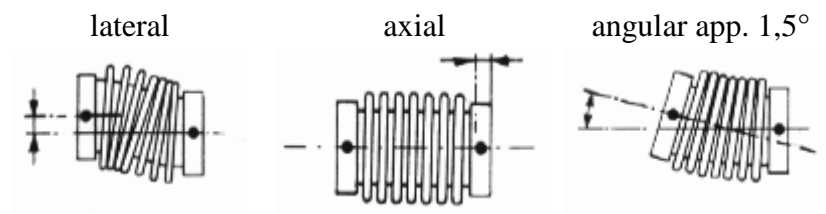
Application:

For installation in

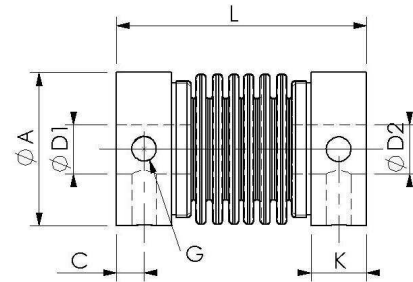
- Stepped motors
- Impulse drives
- Measuring systems
- Low output drives, etc.

Simple clamping is obtained by use of the clamping screws (DIN 916). The relationship between the moment of inertia and the torsion rigid is very pleasant, because of the thin metal bellows.

Shaft misalignment



TYPE 51 up to 25 Nm, mounting hub glued



Size	M _N (Nm)	Allowed shaft misalignment in mm (lateral)	Allowed shaft misalignment in mm (axial)	Moment of inertia (app. g cm ²)	app. weight (in g)	Spring constant (Torque Nm/rad)	L	A	G (DIN EN 916)	D1/D2	D1/D2 (Standard)	C	K
16	0,7	0,10	0,30	3	10	216	26	16	M4	5...8	6H7	3	8
20	1,9	0,10	0,30	11	15	680	29	20	M4	5...12	6H7	3	8
25	3,7	0,13	0,40	35	33	1320	40	25	M5	6...15	10H7	4,5	12
40.1	9	0,17	0,50	297	100	3350	58	40	M8	10...24	12H7	5,5	15,5
40.2	14,5	0,17	0,50	309	105	5600	58	40	M8	10...24	12H7	5,5	15,5
55.1	25	0,17	0,50	900	240	10400	67	54	M10	15...30	16H7	7	19